

september • october calendar 1998



National
Gallery of Art,
Washington

information

Gallery Shops

Elegant pewter frames and vases, decorated with intricate patterns derived from the Gallery's collection of work by Renaissance designer Peter Flötner, are new additions to the shops. In his compendium of designs, *Moresques and Damasquines* (Zurich, 1546), Flötner introduced the arabesque decorative scheme to artists and designers throughout northern Europe.

Patterns by Flötner have inspired designs for other items in the shops, including a silk scarf, silver jewelry, and a pewter letter opener. Gallery curators consult closely with the designers on every item. A card accompanying each piece describes the original work of art and provides historical background.

Catalogues and Guides

Van Gogh's Van Goghs: Masterpieces from the Van Gogh Museum, Amsterdam
\$25.00 (softbound)
\$37.50 (hardbound)

From the Sculptor's Hand: Italian Baroque Terracottas from The State Hermitage Museum
\$29.95 (softbound)

The Shaw Memorial: A Celebration of an American Masterpiece
\$16.95 (softbound)

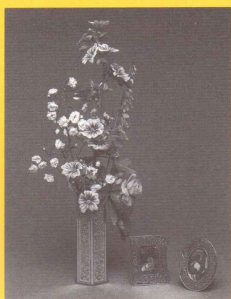
Manet, Monet, and the Gare Saint-Lazare
\$24.95 (softbound)
\$40.00 (hardbound)

Artists and the Avant-Garde Theater in Paris
\$39.50 (softbound)

A Collector's Cabinet
\$17.00 (softbound)

Tour the Gallery's permanent collection with *A World of Art*, a gallery guide available for \$24.95 (softbound) or \$40.00 (hardbound). Also, choose from a selection of illustrated, self-guided brochures, family guides with children's games, and adult walking tours for \$2.50 each.

Sales information: (202) 842-6466. Mail order: (301) 322-5900 or (800) 697-9350. You may also browse the Gallery Shops on the National Gallery of Art's Web site at <http://www.nga.gov>.



Items adapted from *Moresques and Damasquines* (Zurich, 1546), Peter Flötner, c. 1485–1546, National Gallery of Art, Washington, Rosenwald Collection.

Web Site

Information about the National Gallery's comprehensive collection of more than 100,000 works may be found on the Gallery's Web site at <http://www.nga.gov>. Over 4,000 full-screen images and over 11,000 details of works of art are presented in magnificent color. Visitors may take virtual tours of special exhibitions; enjoy audio segments; discover current information on exhibitions, lectures, films, and concerts; examine Manet's painting *The Railway* in-depth; or go shopping online in Gallery Shops.

Charitable Giving

Private support adds magnificent works to the National Gallery, the nation's art collection, and underwrites new innovative educational programs. You, too, can help. For information about making a gift to the National Gallery of Art, call or write:

Development Office
National Gallery of Art
Washington, D.C. 20565
(202) 842-6372

Restaurant Highlights

Concourse Buffet Concourse

Monday–Friday, 10:00–3:00
Saturday, 10:00–3:00
Sunday, 11:00–3:00

Cascade Espresso Bar Concourse

Monday–Saturday, 12:00–4:30
Sunday, 12:00–5:30

Please excuse us while our Concourse Buffet and Cascade Espresso Bar undergo renovations. During the construction period, food services in these areas will continue at the times listed here.

Garden Café West Building, ground floor

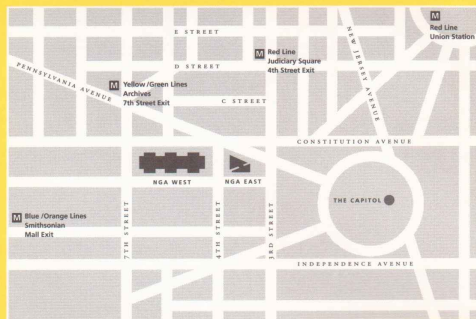
The Garden Café offers classic scenery in which to enjoy lunch. The menu includes entrées related to the current exhibitions, as well as traditional American fare. Beginning October 4, the café remains open on Sunday evenings until 6:30 with special entrées for concertgoers. For individual and group reservations, please call (202) 216-2494.

Monday–Saturday, 11:30–3:00
Sunday, 12:00–4:00 (Sept.);
12:00–6:30 (Oct.)

Terrace Café East Building, upper level

Enjoy a relaxing lunch overlooking the Mall and the Calder mobile. The menu offers a selection of salads, sandwiches, and entrées. For individual and group reservations, please call (202) 216-2492.

Monday–Saturday, 11:30–3:00
Sunday, 12:00–4:00



Gallery Information

The National Gallery of Art and its collections belong to the people of the United States of America. European and American paintings, sculpture, decorative arts, and selected works on paper are displayed in the permanent collection galleries, and temporary exhibitions of art from countries and cultures throughout the world are presented on a regular basis. Works of art on paper not on exhibit are available for viewing by appointment, weekdays. Call (202) 842-6380. Admission is always free.

The Matisse cut-outs are on view 10:00–2:00, Mondays through Saturdays and 11:00–3:00, Sundays.

Hours

Monday–Saturday, 10:00–5:00
Sunday, 11:00–6:00

Exhibition and General Information

Call (202) 737-4215

Web site

Visit the Gallery at <http://www.nga.gov>

Location

The Gallery is located between Third and Seventh Streets, NW, on Constitution Avenue. The nearest Metro stops are *Judiciary Square* on the Red Line, *Archives* on the Yellow/Green Lines, and *Smithsonian* on the Blue/Orange Lines. Metro bus stops are located on Fourth Street and Seventh Street. The East and West Buildings are connected by an all-weather underground passage with a moving walkway. Entrances to the West Building are on the Mall, on Constitution Avenue at Sixth Street, and on Fourth Street. The entrance to the East Building is on Fourth Street.

Calendar

If you or your organization would like to receive this free bimonthly Calendar of Events by mail, call (202) 842-6662, or send your request (include your name and street address) by e-mail to calendar@nga.gov.

A bimonthly schedule of events is also available on the Gallery's Web site, from the general information page: <http://www.nga.gov/ginfo/geninfo.htm>.

Accessibility

Ramps for wheelchairs and strollers are located at the Sixth Street entrance to the West Building on Constitution Avenue, NW, and at the Fourth Street entrance to the East Building. Wheelchairs and strollers are available at all entrances. For information about access to public areas and galleries, refer to the *Brief Guide and Plan* of the West and East Buildings at the art information desks. Limited parking is available in front of the East Building for vehicles displaying the international symbol of accessibility (♿). Call (202) 842-6690.

Assistive listening devices are available on a free-loan basis from the art information desk in the East Building for the large and small auditoriums, and at the Constitution Avenue art information desk for the West Building lecture hall.

Sign-language interpretation is available with three weeks' notice. Call (202) 842-6247 or the TDD line given below.

Telecommunications Device for the Deaf (TDD)

Call (202) 842-6176

To accommodate wheelchair users, a TDD has been installed at the public telephone adjacent to the stamp machine near the Concourse Sales Shop.

calendar

S E P T E M B E R



Hermann-Paul, "La Brebis" (*The Sheep*) by Edmond Sée; "Le Tandem" (*Tandem*) by Léo Trézénik and Pierre Soullaine, 29 May 1896, National Gallery of Art, Washington, Gift of The Atlas Foundation, 1995. On view in Artists and the Avant-Garde Theater in Paris, 1887–1900.

- Guide to Locations**
- eb East Building, ground level art information desk
 - eba East Building auditorium
 - ebsa East Building small auditorium
 - wb West Building Rotunda
 - wbgc West Building Garden Court
 - wblh West Building lecture hall

See listings under Guided Tours for daily tours of the collections and foreign language tours.

1 TUESDAY

11:30 **Film:** *Manet, Monet, and the Gare Saint-Lazare* (eba)

2 WEDNESDAY

11:30 **Film:** *Manet, Monet, and the Gare Saint-Lazare* (eba)
12:30 **Film:** *Morris Louis Goes to Milan* (eba)

3 THURSDAY

11:30 **Film:** *Manet, Monet, and the Gare Saint-Lazare* (eba)
12:30 **Film:** *Morris Louis Goes to Milan* (eba)

4 FRIDAY

11:30 **Film:** *Manet, Monet, and the Gare Saint-Lazare* (eba)
12:30 **Film:** *Morris Louis Goes to Milan* (eba)

5 SATURDAY

11:30 **Film:** *Manet, Monet, and the Gare Saint-Lazare* (eba)
12:30 **Film:** *Closely Watched Trains* (eba)
2:30 **Film:** *Grand Central Murder* (eba)
4:00 **Film:** *Union Depot* (eba)

6 SUNDAY

11:30 **Film:** *Manet, Monet, and the Gare Saint-Lazare* (eba)
2:00 **Film:** *Manet, Monet, and the Gare Saint-Lazare* (eba)
4:00 **Film:** *Cairo Station* (eba)

7 MONDAY

12:00 **Film:** *Terminal Station* (eba)
2:00 **Film:** *Brief Encounter* (eba)
3:30 **Film:** *Strangers on a Train* (eba)

8 TUESDAY

11:30 **Film:** *Manet, Monet, and the Gare Saint-Lazare* (eba)
12:00 **Gallery Talk:** *Manet, Monet, and the Gare Saint-Lazare* (eb)

9 WEDNESDAY

12:30 **Film:** *The Secret Life of Alban Berg* (eba)

10 THURSDAY

11:30 **Film:** *Manet, Monet, and the Gare Saint-Lazare* (eba)
12:30 **Film:** *The Secret Life of Alban Berg* (eba)
1:00 **Gallery Talk:** "Madonna and Child on a Curved Throne" by an Anonymous Byzantine Artist (wb)

11 FRIDAY

11:30 **Film:** *Manet, Monet, and the Gare Saint-Lazare* (eba)
12:00 **Gallery Talk:** *Manet, Monet, and the Gare Saint-Lazare* (eb)
12:30 **Film:** *The Secret Life of Alban Berg* (eba)
1:00 **Gallery Talk:** "Madonna and Child on a Curved Throne" by an Anonymous Byzantine Artist (wb)

12 SATURDAY

11:30 **Film:** *Manet, Monet, and the Gare Saint-Lazare* (eba)
12:30 **Film:** *The Secret Life of Alban Berg* (eba)
1:00 **Gallery Talk:** "Madonna and Child on a Curved Throne" by an Anonymous Byzantine Artist (wb)
3:00 **Film:** *Central Station* (unconfirmed) (eba)

13 SUNDAY

11:30 **Film:** *Manet, Monet, and the Gare Saint-Lazare* (eba)
1:00 **Gallery Talk:** "Madonna and Child on a Curved Throne" by an Anonymous Byzantine Artist (wb)
1:00 **Special Lecture Program:** *Manet, Monet, and the Gare Saint-Lazare* (eba)
5:00 **Films:** *A Place in the Land; The Johnstown Flood; and Journey to America* (eba)

15 TUESDAY

11:30 **Film:** *Manet, Monet, and the Gare Saint-Lazare* (eba)
1:00 **Gallery Talk:** "Madonna and Child on a Curved Throne" by an Anonymous Byzantine Artist (wb)

16 WEDNESDAY

11:30 **Film:** *Manet, Monet, and the Gare Saint-Lazare* (eba)
12:00 **Gallery Talk:** "Diana and a Hound" by Paul Manship (wb)
12:00 **Gallery Talk:** *Manet, Monet, and the Gare Saint-Lazare* (eb)
12:30 **Film:** *In Our Own Time* (eba)

17 THURSDAY

11:30 **Film:** *Manet, Monet, and the Gare Saint-Lazare* (eba)
12:00 **Gallery Talk:** *Manet, Monet, and the Gare Saint-Lazare* (eb)
12:30 **Film:** *In Our Own Time* (eba)
1:00 **Gallery Talk:** "The Walking Man" by Auguste Rodin (wb)

18 FRIDAY

11:30 **Film:** *Manet, Monet, and the Gare Saint-Lazare* (eba)
12:00 **Gallery Talk:** *Manet, Monet, and the Gare Saint-Lazare* (eb)
12:30 **Film:** *In Our Own Time* (eba)
1:00 **Gallery Talk:** "The Walking Man" by Auguste Rodin (wb)

19 SATURDAY

11:30 **Film:** *Manet, Monet, and the Gare Saint-Lazare* (eba)
12:30 **Film:** *A Place To Be* (eba)
1:00 **Gallery Talk:** "The Walking Man" by Auguste Rodin (wb)
2:30 **Films:** *Monument to the Dream; Lady Bird Johnson; and The Making of Liberty* (eba)

20 SUNDAY

11:30 **Film:** *Manet, Monet, and the Gare Saint-Lazare* (eba)
12:00 **Gallery Talk:** "Diana and a Hound" by Paul Manship (wb)
2:00 **Lecture:** *The Splendors of St. Petersburg: The Imperial Architecture* (eba)
4:00 **Films:** *Clear Pictures; A Time for Justice; and The Shadow of Hate* (eba)

21 MONDAY

1:00 **Gallery Talk:** "Andries Stille as a Standard Bearer" by Johannes Cornelisz. Verspronck (wb)

22 TUESDAY

12:00 **Gallery Talk:** *A Collector's Cabinet* (wb)
1:00 **Gallery Talk:** "The Walking Man" by Auguste Rodin (wb)

23 WEDNESDAY

12:00 **Gallery Talk:** "Diana and a Hound" by Paul Manship (wb)
1:00 **Gallery Talk:** "Andries Stille as a Standard Bearer" by Johannes Cornelisz. Verspronck (wb)

24 THURSDAY

12:00 **Gallery Talk:** "The Walking Man" by Auguste Rodin (wb)
1:00 **Gallery Talk:** *The Golden Age of Dutch Painting* (wb)

25 FRIDAY

12:00 **Gallery Talk:** "Diana and a Hound" by Paul Manship (wb)
1:00 **Gallery Talk:** *The Golden Age of Dutch Painting* (wb)

26 SATURDAY

1:00 **Gallery Talk:** *The Golden Age of Dutch Painting* (wb)

27 SUNDAY

12:00 **Gallery Talk:** *A Collector's Cabinet* (wb)
1:00 **Family Program:** *Focus on Sculpture* (preregistration required)
2:00 **Lecture:** *A New Leonardo: The Artist's First Painting* (eba)
4:00 **Films:** *RFK Remembered; Truman; and D-Day Remembered* (eba)

28 MONDAY

1:00 **Gallery Talk:** "Andries Stille as a Standard Bearer" by Johannes Cornelisz. Verspronck (wb)

29 TUESDAY

12:00 **Gallery Talk:** *Florentine Painting and the Medici* (wb)
1:00 **Gallery Talk:** *The Golden Age of Dutch Painting* (wb)

30 WEDNESDAY

12:00 **Gallery Talk:** *A Collector's Cabinet* (wb)

calendar

OCTOBER

1 THURSDAY
12:00 **Gallery Talk:** *The Golden Age of Dutch Painting* (wb)
1:00 **Gallery Talk:** "Bindo Altoviti" by Raphael (wb)

2 FRIDAY
12:00 **Gallery Talk:** *A Collector's Cabinet* (wb)
1:00 **Gallery Talk:** "Bindo Altoviti" by Raphael (wb)

3 SATURDAY
1:00 **Gallery Talk:** "Bindo Altoviti" by Raphael (wb)
12:30 **Films:** *Georgia O'Keeffe; Gertrude Stein: When This You See, Remember Me; Eugene O'Neill: A Glory of Ghosts; and An Eames Celebration* (eba)

4 SUNDAY
12:00 **Gallery Talk:** *Florentine Painting and the Medici* (wb)
1:00 **Family Program:** *Focus on Sculpture* (preregistration required)
2:00 **Lecture:** *Troubled Skies: Van Gogh's Last Paintings* (eba)
4:00 **Films:** *Inner Landscapes: Finnish Cinema, part 1* (eba)
7:00 **Concert:** National Gallery Orchestra (wbgc)

6 TUESDAY
12:00 **Lecture:** *Van Gogh and His Sources* (eba)

7 WEDNESDAY
12:00 **Gallery Talk:** *Florentine Painting and the Medici* (wb)
12:30 **Film:** *A Place To Be* (eba)
1:00 **Gallery Talk:** *Nineteenth-Century French Sculpture* (wb)
2:00 **Slide Overview:** *Van Gogh's Van Goghs* (eba)

Guide to Locations
eb East Building, ground level art information desk
eba East Building auditorium
ebsa East Building small auditorium
wb West Building Rotunda
wbgc West Building Garden Court
wblh West Building lecture hall

See listings under Guided Tours for daily tours of the collections and foreign language tours.

• Hispanic Heritage Month Program

8 THURSDAY
10:30 **Slide Overview:** *Van Gogh's Van Goghs* (eba)
12:00 **Gallery Talk:** "Bindo Altoviti" by Raphael (wb)
12:30 **Film:** *A Place To Be* (eba)
2:00 **Gallery Talk:** *From Workshop to Altarblock: The Techniques of Late Medieval Panel Painting* (wb)

9 FRIDAY
10:30 **Slide Overview:** *Van Gogh's Van Goghs* (eba)
12:00 **Gallery Talk:** *Florentine Painting and the Medici* (wb)
12:30 **Film:** *A Place To Be* (eba)
2:00 **Slide Overview:** *Van Gogh's Van Goghs* (eba)

10 SATURDAY
10:30 **Slide Overview:** *Van Gogh's Van Goghs* (eba)
12:00 **Lecture:** *Van Gogh and His Sources* (eba)
2:00 **Gallery Talk:** *Auguste Rodin, 1840–1917* (wb)
2:30 **Films:** *Inner Landscapes: Finnish Cinema, part 2* (eba)

11 SUNDAY
12:00 **Slide Overview:** *Van Gogh's Van Goghs* (eba)
2:00 **Lecture:** *From the Sculptor's Hand: Italian Baroque Ternaocostas* (eba)
4:00 **Films:** *Inner Landscapes: Finnish Cinema, part 3* (eba)
7:00 **Concert:** Anthony Goldstone and Caroline Clemmow, duo pianists (wbgc)

12 MONDAY
1:00 **Gallery Talk:** *The Laocoön: El Greco's Response to the Ancients* (wb)

13 TUESDAY
10:30 **Slide Overview:** *Van Gogh's Van Goghs* (eba)
12:00 **Lecture:** *Van Gogh's Self-Portraits* (eba)
1:00 **Gallery Talk:** *Auguste Rodin, 1840–1917* (wb)
2:00 **Slide Overview:** *Van Gogh's Van Goghs* (eba)

14 WEDNESDAY
12:00 **Gallery Talk:** *Nineteenth-Century French Sculpture* (wb)
12:00 **Film:** *In a Brilliant Light—Van Gogh in Arles* (eba)
2:00 **Slide Overview:** *Van Gogh's Van Goghs* (eba)

15 THURSDAY
10:30 **Special Ceremony:** *Traditional Holiday Stamp Ceremony* (eba)
12:00 **Gallery Talk:** "The Assumption of the Virgin" by Nicolas Poussin (wb)
2:00 **Gallery Talk:** *From Workshop to Altarblock: The Techniques of Late Medieval Panel Painting* (wb)
2:00 **Slide Overview:** *Van Gogh's Van Goghs* (eba)

16 FRIDAY
10:30 **Slide Overview:** *Van Gogh's Van Goghs* (eba)
12:00 **Gallery Talk:** *Nineteenth-Century French Sculpture* (wb)
12:00 **Film:** *In a Brilliant Light—Van Gogh in Arles* (eba)
2:00 **Slide Overview:** *Van Gogh's Van Goghs* (eba)

17 SATURDAY
10:30 **Slide Overview:** *Van Gogh's Van Goghs* (eba)
10:30 **Family Program:** *How's the Weather?* (preregistration required)
12:00 **Lecture:** *Van Gogh's Self-Portraits* (eba)
1:00 **Gallery Talk:** *The Laocoön: El Greco's Response to the Ancients* (wb)
2:30 **Films:** *Inner Landscapes: Finnish Cinema, part 4* (eba)

18 SUNDAY
12:00 **Slide Overview:** *Van Gogh's Van Goghs* (eba)
1:00 **Family Program:** *Focus on Sculpture* (preregistration required)
2:00 **Lecture:** *Dear Theo, Thank You for the Paints: Vincent van Gogh's Materials, His Technique, and the Presentation of Paintings* (eba)
4:00 **Films:** *Inner Landscapes: Finnish Cinema, part 5* (eba)
7:00 **Concert:** Francine Kay, pianist (wbgc)

19 MONDAY
1:00 **Gallery Talk:** *The Laocoön: El Greco's Response to the Ancients* (wb)
2:00 **Slide Overview:** *Van Gogh's Van Goghs* (eba)

20 TUESDAY
10:30 **Slide Overview:** *Van Gogh's Van Goghs* (eba)
12:00 **Lecture:** *Van Gogh in Holland and Paris* (eba)
1:00 **Gallery Talk:** *Auguste Rodin, 1840–1917* (wb)
2:00 **Slide Overview:** *Van Gogh's Van Goghs* (eba)

21 WEDNESDAY
12:00 **Gallery Talk:** *Auguste Rodin, 1840–1917* (wb)
12:00 **Film:** *Vincent: The Life and Death of Vincent van Gogh* (eba)
1:00 **Gallery Talk:** *Bernini's Rome* (wb)
2:00 **Slide Overview:** *Van Gogh's Van Goghs* (eba)

22 THURSDAY
10:30 **Slide Overview:** *Van Gogh's Van Goghs* (eba)
12:00 **Film:** *Vincent: The Life and Death of Vincent van Gogh* (eba)
12:00 **Gallery Talk:** "The Assumption of the Virgin" by Nicolas Poussin (wb)
1:00 **Gallery Talk:** *Bernini's Rome* (wb)
2:00 **Slide Overview:** *Van Gogh's Van Goghs* (eba)

23 FRIDAY
10:30 **Slide Overview:** *Van Gogh's Van Goghs* (eba)
12:00 **Gallery Talk:** *Auguste Rodin, 1840–1917* (wb)
12:00 **Film:** *Vincent: The Life and Death of Vincent van Gogh* (eba)
1:00 **Gallery Talk:** *Bernini's Rome* (wb)
2:00 **Slide Overview:** *Van Gogh's Van Goghs* (eba)

24 SATURDAY
10:30 **Slide Overview:** *Van Gogh's Van Goghs* (eba)
10:30 **Family Program:** *How's the Weather?* (preregistration required)
12:00 **Lecture:** *Van Gogh in Holland and Paris* (eba)
12:00 **Gallery Talk:** *From Workshop to Altarblock: The Techniques of Late Medieval Panel Painting* (wb)
2:30 **Films:** *Inner Landscapes: Finnish Cinema, part 6* (eba)

25 SUNDAY
12:00 **Slide Overview:** *Van Gogh's Van Goghs* (eba)
2:00 **Lecture:** *Picturing the Painter: Self-Portraits and the Professional Self* (eba)
4:00 **Films:** *Inner Landscapes: Finnish Cinema, part 7* (eba)
7:00 **Concert:** The Alcan String Quarter (wbgc)

26 MONDAY
12:00 **Gallery Talk:** "The Assumption of the Virgin" by Nicolas Poussin (wb)
2:00 **Slide Overview:** *Van Gogh's Van Goghs* (eba)

27 TUESDAY
10:30 **Slide Overview:** *Van Gogh's Van Goghs* (eba)
12:00 **Lecture:** *Van Gogh's Flowers* (eba)
1:00 **Gallery Talk:** *Bernini's Rome* (wb)
2:00 **Slide Overview:** *Van Gogh's Van Goghs* (eba)

28 WEDNESDAY
12:00 **Gallery Talk:** *Bernini's Rome* (wb)
12:00 **Film:** *In a Brilliant Light—Van Gogh in Arles* (eba)
1:00 **Gallery Talk:** *Reading Art: Mythology* (wb)
2:00 **Slide Overview:** *Van Gogh's Van Goghs* (eba)

29 THURSDAY
10:30 **Slide Overview:** *Van Gogh's Van Goghs* (eba)
12:00 **Gallery Talk:** *Bernini's Rome* (wb)
12:00 **Film:** *In a Brilliant Light—Van Gogh in Arles* (eba)
1:00 **Gallery Talk:** *Gifts to the Nation from Mr. and Mrs. John Hay Whitney* (eb)
2:00 **Slide Overview:** *Van Gogh's Van Goghs* (eba)

30 FRIDAY
10:30 **Slide Overview:** *Van Gogh's Van Goghs* (eba)
12:00 **Gallery Talk:** *Bernini's Rome* (wb)
12:00 **Film:** *In a Brilliant Light—Van Gogh in Arles* (eba)
1:00 **Gallery Talk:** *Gifts to the Nation from Mr. and Mrs. John Hay Whitney* (eb)
2:00 **Slide Overview:** *Van Gogh's Van Goghs* (eba)

31 SATURDAY
10:30 **Slide Overview:** *Van Gogh's Van Goghs* (eba)
12:00 **Lecture:** *Van Gogh's Flowers* (eba)
2:30 • **Film:** *Arturo Ripstein's Principio y fin* (eba)

programs

Gallery Talks

Talks begin in the West Building Rotunda (wb), at the East Building art information desk (eb), or in the East Building large auditorium (eba).

Focus: The Permanent Collection

"Madonna and Child on a Curved Throne" by an Anonymous Byzantine Artist (20 minutes). Russell Sale, staff. September 10–13 and 15 at 1:00 (wb)

"Diana and a Hound" by Paul Manship (20 minutes). Wilford W. Scott, staff. September 16, 20, 23, and 25 at noon (wb)

"The Walking Man" by Auguste Rodin (20 minutes). Wilford W. Scott, staff. September 17–19 and 22 at 1:00; September 24 at noon (wb)

"Andries Stille as a Standard Bearer" by Johannes Cornelisz. Verspronck (20 minutes). Lynn P. Russell, staff. September 21, 23, and 28 at 1:00 (wb)

The Golden Age of Dutch Painting (50 minutes). Philip Leonard, staff. September 24–26 and 29 at 1:00; October 1 at noon (wb)

Florentine Painting and the Medici (50 minutes). Frances Feldman, staff. September 29, October 4, 7, and 9 at noon (wb)

"Bindo Altovini" by Raphael (20 minutes). Frances Feldman, staff. October 1–3 at 1:00; October 8 at noon (wb)

Nineteenth-Century French Sculpture (50 minutes). Eric Denker, staff. October 7 at 1:00; October 14 and 16 at noon (wb)

From Workshop to Altarblock: The Techniques of Late Medieval Panel Painting (50 minutes). Charles Griffith Mann, fellow. October 8, 15, and 24 at 2:00 (wb)

Auguste Rodin, 1840–1917 (50 minutes). Eric Denker, staff. October 10 at 2:00; October 13 and 20 at 1:00; October 21 and 23 at noon (wb)

The Laocoön: El Greco's Response to the Ancients (50 minutes). Esperança Maria Camara, fellow. October 12, 17, and 19 at 1:00 (wb)

"The Assumption of the Virgin" by Nicolas Poussin (20 minutes). Bärbel Reyners, intern. October 15, 22, and 26 at noon (wb)

Special Exhibitions

Manet, Monet, and the Gare Saint-Lazare (50 minutes). Russell Sale, staff. September 8, 11, and 16–18 at noon (eb)

A Collector's Cabinet (50 minutes). Philip Leonard, staff. September 22, 27, 30, and October 2 at noon (wb)

Introductory Slide Overview. Van Gogh's Van Goghs: Masterpieces from the Van Gogh Museum, Amsterdam (35 minutes). Education division staff. October 7, 9, 13–16, 19–23, and 26–30 at 2:00; October 8–10, 13, 16, 17, 20, 22–24, 27, 29–31 at 10:30; October 11, 18, and 25 at noon (eba)

Bernini's Rome: Italian Baroque Terracottas from The State Hermitage Museum, St. Petersburg (50 minutes). Russell Sale, staff. October 21–23 and 27 at 1:00; October 28–30 at noon (wb)

Gifts to the Nation from Mr. and Mrs. John Hay Whitney (50 minutes). Philip Leonard, staff. October 29–30 at 1:00 (eb)

Introducing Art

Reading Art: Mythology (50 minutes). Philip Leonard, staff. October 28 at 1:00 (wb)



Vincent van Gogh, *Flowerpot with Chives*, 1887, Van Gogh Museum, Amsterdam (Vincent van Gogh Foundation). On view in *Van Gogh's Van Goghs*.

Family Programs

Focus on Sculpture. Families will explore the techniques used to create sculpture by participating in discussions and hands-on activities. From 1:00 to 3:00 on September 27, October 4 and 18, and November 15 and 22. Ages seven to twelve. Registration begins September 6.

How's the Weather? Families will have fun looking at art, learning about the weather, and making works to take home. From 10:30 to 11:45 on October 17 and 24, and November 7 and 14. Ages three to six. Registration begins September 20.

Programs are free and are designed for children accompanied by an adult. Preregistration is required. Choose one date for each program. Call (202) 789-3030.

Lectures

Sunday Lectures

East Building auditorium at 2:00

SEPTEMBER 20

The Splendors of St. Petersburg: The Imperial Architecture. William Craft Brumfield, professor, department of Germanic and Slavic languages, Tulane University

SEPTEMBER 27

A New Leonardo: The Artist's First Painting. David Alan Brown, curator, Italian Renaissance Paintings, National Gallery of Art, book signing to follow

OCTOBER 4

Troubled Skies: Van Gogh's Last Paintings. John Leighton, director, Van Gogh Museum, Amsterdam

OCTOBER 11

From the Sculptor's Hand: Italian Baroque Terracottas from The State Hermitage Museum, St. Petersburg. Ian Wardropper, Eloise W. Martin Curator of European Decorative Arts, Sculpture and Ancient Art, The Art Institute of Chicago

OCTOBER 18

Dear Theo, Thank You for the Paints: Vincent van Gogh's Materials, His Technique, and the Presentation of Paintings. Ann Hoenigswald, paintings conservator, National Gallery of Art

OCTOBER 25

Picturing the Painter: Self-Portraits and the Professional Self. Carol Zemel, professor and chair, department of art history, State University of New York, Buffalo

Special Lecture Program

Manet, Monet, and the Gare Saint-Lazare Sunday, September 13 East Building auditorium 1:00–3:00

Manet's Perspective. Malcom Park, independent scholar, New South Wales, Australia

Manet's Impressionism. Jane Roos, assistant professor of art history, Hunter College, City University of New York

Special Lecture Series

Approaches to Van Gogh East Building auditorium Tuesdays and Saturdays at noon

This series of lectures, given by Gallery staff, explores diverse aspects of Van Gogh's life, career, and reputation.

OCTOBER 6 AND 10

Van Gogh and His Sources Eric Denker

OCTOBER 13 AND 17

Van Gogh's Self-Portraits Frances Feldman

OCTOBER 20 AND 24

Van Gogh in Holland and Paris Russell Sale

OCTOBER 27 AND 31

Van Gogh's Flowers Philip Leonard

NOVEMBER 3 AND 7

Van Gogh in Arles Wilford W. Scott

NOVEMBER 10 AND 14

Van Gogh in St. Remy Faya Causey

Van Gogh in Auvers Lynn Russell

programs

Guided Tours

Introductory Tours

The West Building Collection
Monday – Friday 11:30 and 3:30
Saturday 10:30 and 12:30
Sunday 12:30, 2:30, and 4:30
West Building Rotunda

The East Building Collection

Monday – Friday 10:30 and 1:30
Saturday and Sunday 11:30, 1:30,
and 3:30
East Building art information desk

The Italian Renaissance Collection

Monday – Friday 12:30
West Building Rotunda

The American Collection

Monday – Saturday 2:30
West Building Rotunda

*No Introductory Tours will be given
in the West Building on October 6.*

Foreign Language Tours

Tours of the Gallery's permanent collection are offered on the dates listed below. West Building and American tours begin at noon in the Rotunda. East Building tours begin at 2:00 at the art information desk.

September 14 and October 5:

American Art in French
September 1 and October 6:
*French**

• September 5, 8, 17 and October 3,
13, 22: *Spanish*

September 10, 12, 24 and October 8,
10, 22: *Japanese*

September 15, 19 and October 20, 24:
German

September 17, 26, 29 and
October 15, 17, 27: *Russian*
September 29 and October 27:
Italian

• September 25 and October 30:
American Art in Spanish

**No West Building Tour in French
on October 6*

Hispanic Heritage Month at the National Gallery of Art

The National Gallery of Art recognizes Hispanic Heritage month in October with special events, marked with a (*), including tours and Arturo Ripstein's film *Principio y fin*.

Audio Tours

The Director's Tour

Narrated by Director Earl A. Powell III and Gallery curators, this audio tour of some of the Gallery's greatest treasures is available in the INFORM® format. Visitors choose the order in which they will look at paintings and the length of time they will spend with each.

This tour provides commentary on more than fifty beloved masterpieces by Leonardo da Vinci, Rembrandt van Rijn, Johannes Vermeer, Claude Monet, and others, along with information on art acquisition, history, and conservation.

The Director's Tour is available for rental near the Rotunda in the West Building for \$5.00 for adults and \$4.50 for senior citizens, students, and groups of ten or more.

Special Exhibitions

Manet, Monet, and the Gare Saint-Lazare, narrated by Earl A. Powell III, director, and His Excellency François Bujon de l'Estang, Ambassador of France to the United States (rent at exhibition entrance).

Van Gogh's Van Goghs: Masterpieces from the Van Gogh Museum, Amsterdam, in the INFORM® format (rent at East Sculpture Hall, main floor, West Building).

Special exhibition tours may be rented for \$4.00 for adults and \$3.50 for senior citizens, students, and groups of ten or more.

Earphones, amplified headsets, and scripts are available for visitors with hearing impairments. For group reservations call (202) 842-6592.



Film Programs

East Building auditorium

A festival of narrative films set in train stations—including Jiri Menzel's *Closely Watched Trains* (1966), Youssef Chahine's *Cairo Station* (1958), Vittorio De Sica's *Terminal Station* (1953) and David Lean's *Brief Encounter* (1945)—is scheduled for Labor Day weekend in conjunction with the exhibition *Manet, Monet, and the Gare Saint-Lazare*.

A retrospective of films by Washington, D.C., documentary filmmaker Charles Guggenheim opens on September 13 with *A Place in the Land* (1998). Included in the series are three Academy Award winning documentaries—*RFK Remembered* (1968), *The Johnstown Flood* (1989), and *A Time for Justice* (1994)—as well as a new print of his film on the design and construction of the East Building, *A Place To Be*.

On Saturday, October 3, a tribute to documentarian Perry Miller Adato will include several of her best-known films about artists—*Georgia O'Keeffe*; *Gertrude Stein: When This You See, Remember Me*; *Eugene O'Neill: A Glory of Ghosts*; and *An Eames Celebration*. A survey of cinema from Finland, *Inner Landscapes*, opens Sunday, October 4, and continues on weekends through October 25.

Concert Series

The 1998–1999 concert season, our fifty-seventh, begins October 4, 1998. Concerts take place at 7:00 Sunday evenings and are free of charge. Concertgoers are admitted to the West Garden Court on a first-come, first-served basis beginning at 6:00. The Sixth Street and Constitution Avenue entrance to the West Building remains open until 7:00, and the Garden Café is open until 6:30. Recorded information is available at (202) 842-6941.

OCTOBER 4
National Gallery Orchestra
George Manos, conductor

In honor of the exhibition
Van Gogh's Van Goghs, music by
contemporaries of the artist

OCTOBER 11
Anthony Goldstone and Caroline Clemmow, duo pianists
Music for piano, four hands, by
Mozart, Schubert, and Rimsky-Korsakov

OCTOBER 18
Francine Kay, pianist
Schumann: *Novelette, Op. 21/8*;
Fantasiestücke, Op. 12
Satie: *Trois valses*
Debussy: *Préludes; L'isle joyeuse*

OCTOBER 25
The Alcan String Quartet
Music for string quartets by
Debussy, Grieg, and Kelly
Marie Murphy

From *The Johnstown Flood*, 1989, Charles
Guggenheim, Sunday, September 13.

Radio Program

This Week at the National Gallery, hosted by Barbara Tempchin, airs Saturdays at 1:24 pm immediately before the weekly opera broadcast on WGMS 103.5 FM.

*This program is made possible by
The Circle of the National Gallery
of Art.*

Holiday Stamp

The U.S. Postal Service's Traditional Holiday Stamp will be unveiled Thursday, October 15 at 10:30 in the East Building auditorium. The stamp features a Florentine sculpture, *Madonna and Child*, c. 1425, from the Gallery's permanent collection. No reservations are required.

exhibitions

EXHIBITION PASSES

A pass system has been instituted for two major exhibitions this fall:

Edo: Art in Japan 1615–1868

Passes will be required on weekends and the following holidays and weekdays: November 26, 27, December 28–31, January 18, and February 15. The Gallery is closed December 25 and January 1.

Van Gogh's Van Goghs: Masterpieces from the Van Gogh Museum, Amsterdam

Passes will be required every day.

Same-Day Passes

Same-day passes for *Edo* will be available at the East Building pass desk, located on the main level. Same-day passes for *Van Gogh* may be picked up at the West Building pass desk, located in the Rotunda.

Advance Passes

Advance passes for both exhibitions will be available free of charge in the East Building at the pass desk. They may also be obtained at all TicketMaster locations and Hecht's stores for a \$2.00 service charge per pass and through TicketMaster PhoneCharge for a \$2.75 service fee per pass and a \$1.25 handling fee per order (limit of six tickets per person.)

Washington, DC (202) 432-SEAT
Baltimore, MD (410) 481-SEAT
Northern Virginia (703) 573-SEAT
Nationwide toll free
(800) 551-SEAT

For information about passes, call the National Gallery of Art at (202) 737-4215 or the Telecommunications Device for the Deaf (TDD) at (202) 842-6176.

CLOSING EXHIBITION

Manet, Monet, and the Gare Saint-Lazare

*Through September 20, 1998
East Building, mezzanine and upper level northwest*

The works in this exhibition were created in the Europe district of Paris, where the great train station, the Gare Saint-Lazare, with its roaring steam engines, symbolized a new modern energy and optimism.

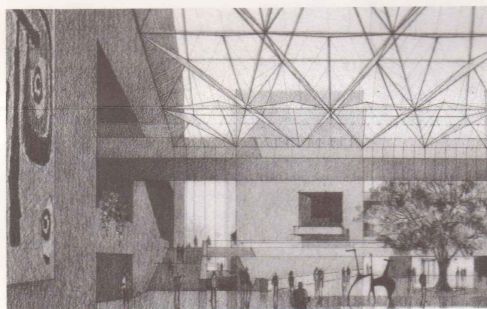
The exhibition is made possible by a grant from The Florence Gould Foundation.

The exhibition is organized by the National Gallery of Art, Washington, and the Réunion des Musées Nationaux/Musée d'Orsay, Paris.

It is supported by an indemnity from the Federal Council on the Arts and the Humanities.



Claude Monet, *Gare Saint-Lazare: The Normandy Line Viewed from Beneath the Pont de l'Europe*, 1877, Private Collection, Courtesy of Galerie Brame & Lorenceau.



Paul Stevenson Oles, *Perspective study for space frame*, National Gallery of Art East Building, 11 March 1971, National Gallery of Art, Gallery Archives, Gift of I.M. Pei & Partners.

CLOSING EXHIBITION

A Design for the National Gallery of Art: Celebrating the Twentieth Anniversary of I.M. Pei's East Building

*Through October 11, 1998
East Building, large auditorium*

This special installation of nineteen drawings, conceptual sketches, and construction photographs celebrates the twentieth anniversary of the opening of the Gallery's East Building and the thirtieth anniversary of I.M. Pei's appointment as building architect.

RETURNING INSTALLATION

Augustus Saint-Gaudens' Memorial to Robert Gould Shaw and the Massachusetts Fifty-Fourth Regiment

*Fall 1998
West Building, main floor gallery 66*

Created by Augustus Saint-Gaudens (1848–1907), this sculpture depicts Colonel Shaw and the first African-American infantry unit from the North to fight for the Union during the Civil War. The work is on a ten-year renewable loan from the National Park Service, Saint-Gaudens National Historic Site, Cornish, New Hampshire.



The exhibition is organized by the National Gallery of Art, Washington. The Shaw Memorial Project is made possible by the generous support of The Circle of the National Gallery of Art. Additional support is provided by Shell Oil Company Foundation.

FORTHCOMING EXHIBITIONS

Love and War: A Manual for Life in the Late Middle Ages

*November 8, 1998 through
January 31, 1999*

Edo: Art in Japan 1615–1868

*November 15, 1998 through
February 15, 1999*

American Impressionism and Realism: The Margaret and Raymond Horowitz Collection

*January 24, 1999 through
May 9, 1999*

From Botany to Bouquets: Flowers in Northern Art

*January 31, 1999 through
May 31, 1999*

John Singer Sargent

*February 21, 1999 through
May 31, 1999*

Augustus Saint-Gaudens, *Shaw Memorial*, 1900 (as it appears at the National Gallery of Art, 1998), U.S. Department of the Interior, National Park Service, Saint-Gaudens National Historic Site, Cornish, New Hampshire.

exhibitions



Caspar Vopell, *Terrestrial Globe within Armillary Sphere*, 1543, The Library of Congress, Washington.

CONTINUING EXHIBITION

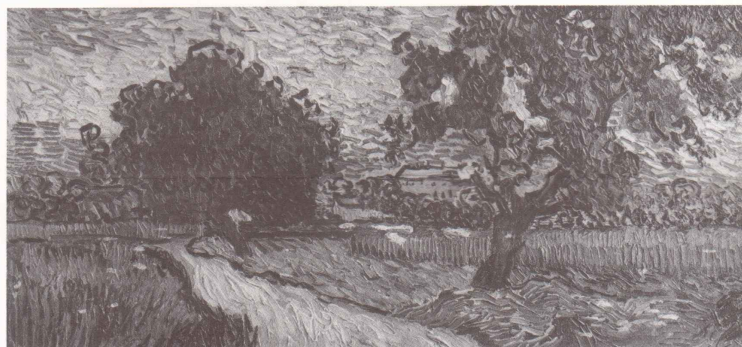
A Collector's Cabinet

*Through November 1, 1998
West Building, main floor
Dutch Cabinet Galleries (50A-C)*

This exhibition re-creates the character of a seventeenth-century collector's cabinet with an assembly of artistic and natural objects chosen for pleasure and wonder. An illustrated catalogue accompanies the exhibition.

The exhibition is organized by the National Gallery of Art.

Shell Oil Company Foundation, on behalf of the employees of Shell Oil Company, is proud to make possible this presentation to the American people.



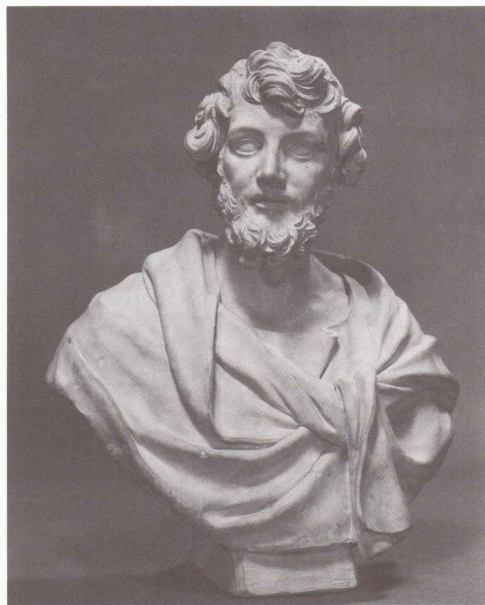
Vincent van Gogh, *Landscape at Twilight*, June 1890, Van Gogh Museum, Amsterdam (Vincent van Gogh Foundation).

OPENING EXHIBITION

Van Gogh's Van Goghs: Masterpieces from the Van Gogh Museum, Amsterdam

*October 4, 1998 through
January 3, 1999
West Building, main floor galleries*

This selection of seventy paintings by Vincent van Gogh (1853–1890) represents the largest survey of his career outside The Netherlands in more than a quarter of a century. These paintings—part of Van Gogh's treasured oeuvre kept together by his



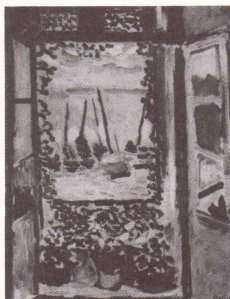
Alessandro Algardi, *Saint Matthew*, c. 1640, National Gallery of Art, Washington, Ailsa Mellon Bruce Fund.

OPENING EXHIBITION

Gifts to the Nation from Mr. and Mrs. John Hay Whitney

*October 25, 1998 through
January 3, 1999
East Building, mezzanine northwest*

Masterpieces by Vincent van Gogh, Henri de Toulouse-Lautrec, Henri Matisse, and Georges Braque are among the works on view in this special exhibition of sixteen paintings bequeathed to the Gallery by John Hay Whitney and his wife, Betsey Cushing Whitney.



Henri Matisse, *Open Window, Collioure*, 1905, National Gallery of Art, Washington, Collection of Mr. and Mrs. John Hay Whitney.

OPENING EXHIBITION

Bernini's Rome: Italian Baroque Terracottas from The State Hermitage Museum, St. Petersburg

*October 11, 1998 through
January 3, 1999
West Building, main floor
galleries 38–40*

Thirty-five rarely exhibited terracotta *bozzetti* from Russia's State Hermitage Museum are presented in this exhibition. Fourteen artists are represented, providing a rare opportunity to see works by many masters of seventeenth- and early eighteenth-century Italian sculpture, including Gian Lorenzo Bernini and Alessandro Algardi. A fully illustrated catalogue is available.

The exhibition is organized by The Art Institute of Chicago and The State Hermitage Museum, St. Petersburg.

The exhibition is made possible by Republic National Bank of New York, Safra Republic Holdings S.A., Luxembourg, and Banco Safra S.A., Brazil.

CLOSING EXHIBITION

Artists and the Avant-Garde Theater in Paris, 1887–1900

*Through September 7, 1998
East Building, ground level
northwest*

This exhibition of sixty-nine prints and related works from the Gallery's Martin and Liane W. Atlas Collection—one of the finest collections of late nineteenth-century French theater programs in the world—explores the unique relationship between the visual and performing arts in Paris during that period.

National Gallery of Art
Washington, DC 20565

ON THE COVER:

Vincent van Gogh, *Self-Portrait as an Artist*, winter 1887–1888, Van Gogh Museum, Amsterdam (Vincent van Gogh Foundation). On view in *Van Gogh's Van Goghs*.

Sept·Oct